

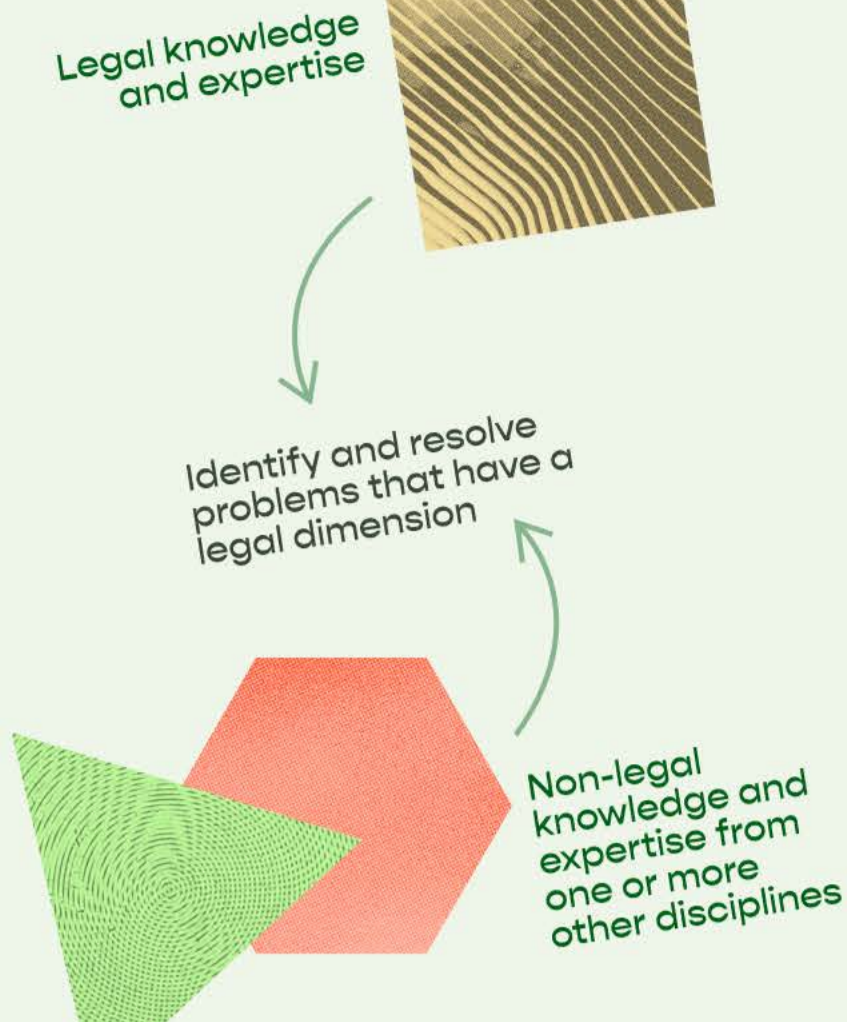
# Multi-Disciplinary Legal Problem Resolution

An explainer

## What is Multi-Disciplinary Legal Problem Resolution?

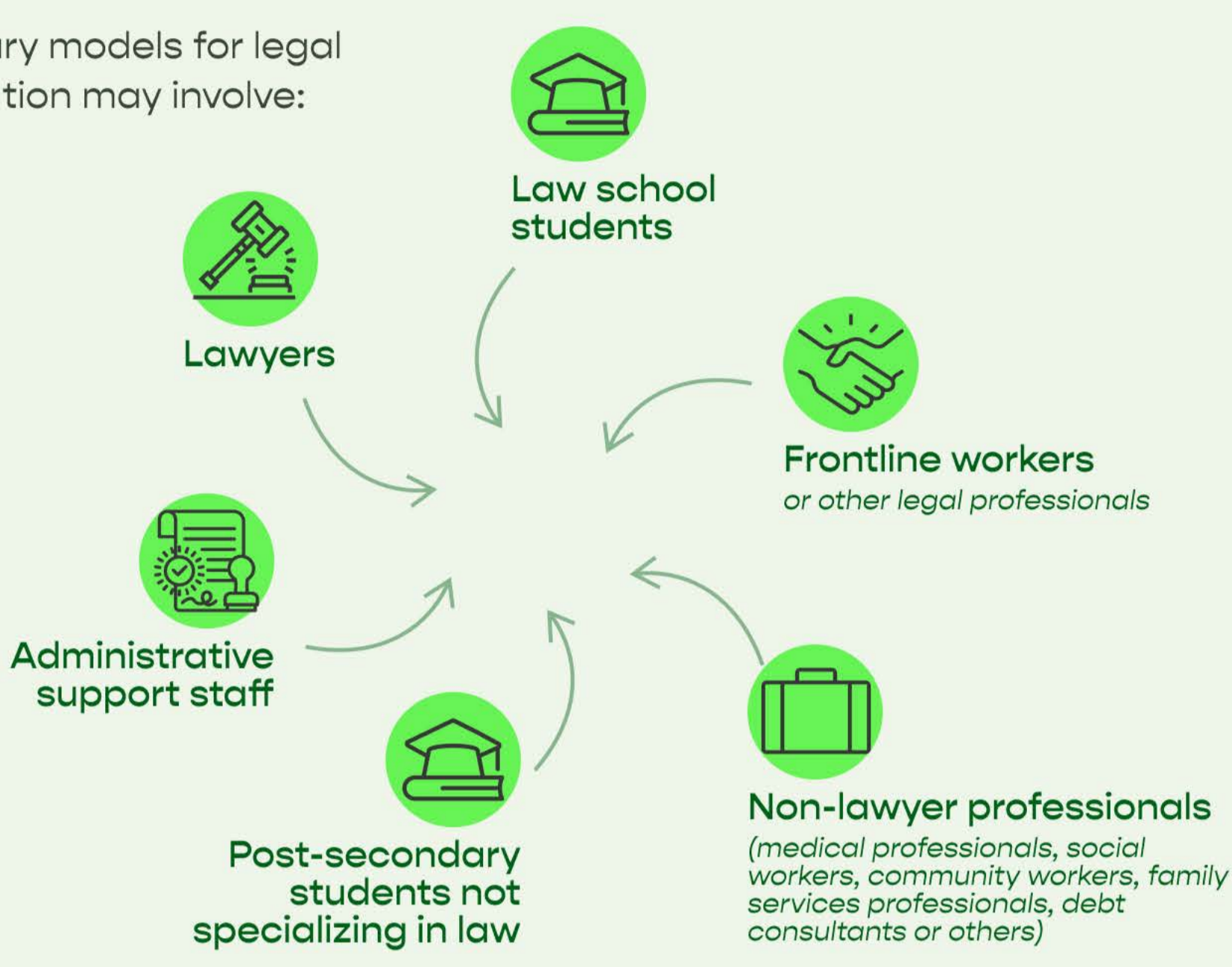
A model for resolving problems that combines legal expertise and non-legal expertise.

It involves collaboration between people from different disciplines who together can help identify and resolve problems that have a legal dimension.

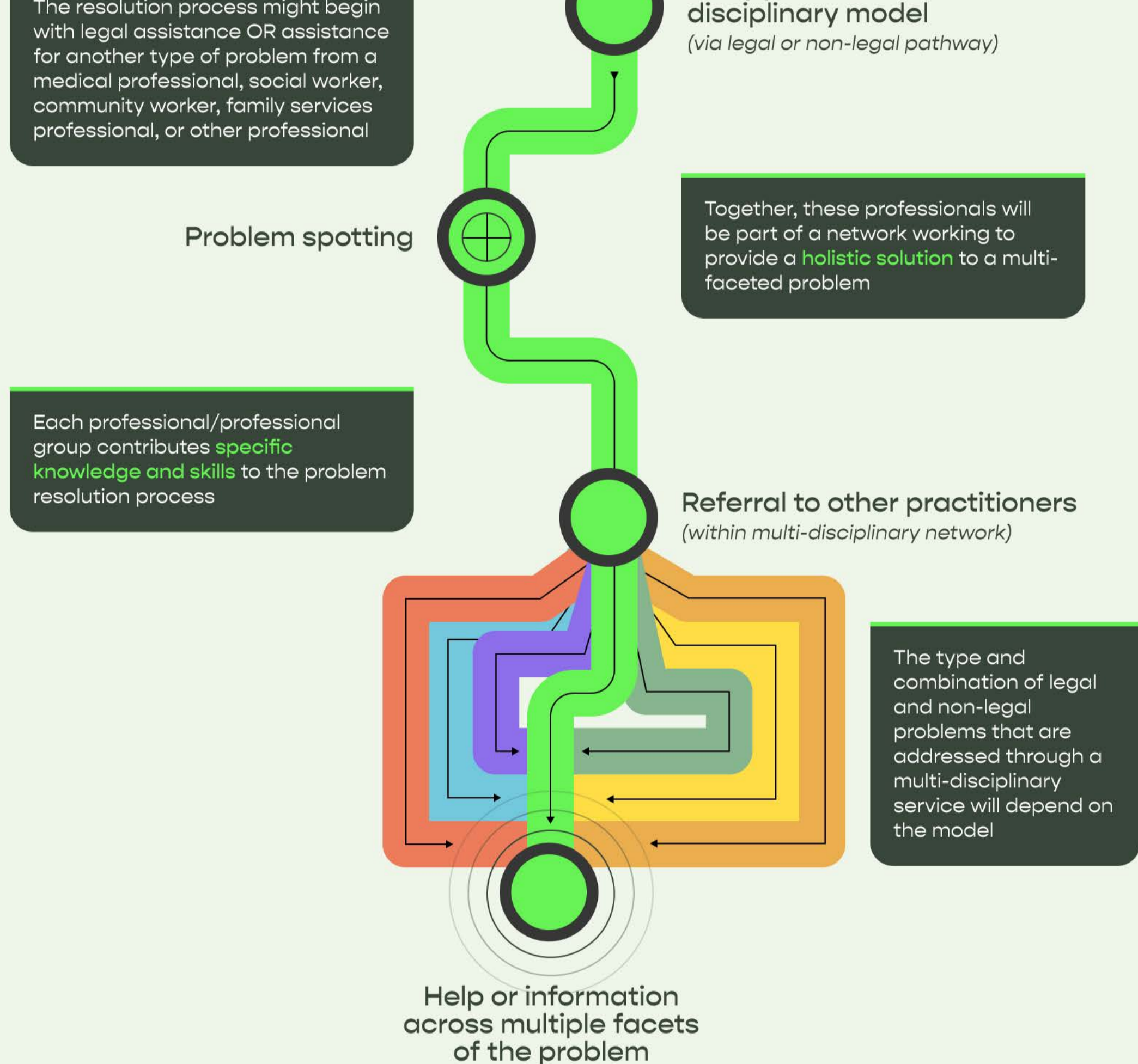


## Who Is Involved?

Multi-disciplinary models for legal problem resolution may involve:



## How Does Multi-Disciplinary Legal Problem Resolution Work?



## What Are the Types of Multi-Disciplinary Legal Problem Resolution Models?



**Medical-Legal Partnerships**  
(or Health-Justice Partnerships)  
Medical-legal partnerships often consider the social and economic factors impacting people's health (social determinants) or adopt a view of health problems as social, legal or other types of problems



**Social Work-Legal Services Partnerships**  
Experiences of social adversity and serious civil or family justice problems might be best addressed by a team with the combined expertise to handle the diverse legal aspects of these problems and their varied social contexts.



**Community Justice Models**  
Community justice models use the community as a resource to identify and address unmet legal need and legal problems. These models might rely on trusted (non-legal) intermediaries to direct people to available legal supports.



**Family and Legal Services Partnerships**  
Family and legal services partnerships contemplate legal and non-legal supports that help people experiencing complex family problems. These models might provide various supports such as parenting education or domestic violence treatment and prevention, alongside legal assistance related to custody arrangements or divorce proceedings.



**Other Models**  
Professionals from various disciplines might work in partnership with lawyers to address specific types of problems. These multi-disciplinary models may have distinct objectives beyond legal problem resolution, such as providing information on managing the non-legal aspects of a problem

## What Are Some Things to Consider When Developing a Multi-Disciplinary Model?

- Funding**
  - For multi-disciplinary models to work in the long-term, they need steady funding. It is often difficult to secure funding beyond the pilot project phase
  - Multi-disciplinary models often rely on in-kind support, including office space and administrative staff resources
  - Individuals getting help through multi-disciplinary models may still incur out-of-pocket expenses, such as transportation or childcare costs
- Professional and Ethical Boundaries**
  - There may be conflicting professional obligations within multi-disciplinary teams, which could potentially be addressed through work policies
  - Multi-disciplinary models should contemplate issues of client/patient confidentiality and privacy
- Communication**
  - Multi-disciplinary models benefit from clear plans for communication and knowledge exchange
- Role Differentiation**
  - Within multi-disciplinary models, there should be clear task and role differentiation
- Adequate professional supervision for students working in multi-disciplinary networks**
  - Within multi-disciplinary models, law students and students from other disciplines benefit most from supervision by professionals from their respective discipline
- Respect among Professional Counterparts**
  - Mutual respect among professionals working within a multi-disciplinary model is critical for the success of these models

## What are the Benefits of Multi-Disciplinary Models for Legal Problem Resolution?

